



THE LAND ROVER COLLECTION



ABOVE & BEYOND



CONTENTS

THE LIFESTYLE COLLECTION	05
MEN'S APPAREL	08
WOMEN'S APPAREL	16
GIFTS AND LIFESTYLE	20
LUGGAGE	28
SUNGLASSES	32
RANGE ROVER COLLECTION	34
THE ABOVE AND BEYOND COLLECTION	45
MEN'S AND WOMEN'S APPAREL	48
DOG RANGE	66
ACCESSORIES	72
MODEL CARS	86
THE HERITAGE COLLECTION	93
MEN'S APPAREL	96
ACCESSORIES	98
DOG RANGE	108

EQUIP YOURSELF FOR THE ALL-TERRAIN LIFESTYLE. WITH ACCESSORIES AND APPAREL THAT TAKE LAND ROVER DESIGN INTO NEW TERRITORY. FEATURING EVERYTHING FROM CLASSIC CHRONOGRAPHS TO COLLECTORS' EDITION SCALE MODELS, IT'S A RANGE THAT'S RUGGED AND STYLISH. INSPIRED BY THE LAND ROVER SPIRIT OF ADVENTURE. AND BUILT TO GO THE DISTANCE.



ABOVE & BEYOND



THE LIFESTYLE COLLECTION



ABOVE & BEYOND

A man with a beard and short dark hair is wearing a blue high-necked jacket. He is standing outdoors, positioned between a large, layered rock formation on the left and a smooth, light-colored concrete wall on the right. The background shows a blurred landscape with hills under a cloudy sky. The overall tone is rugged and adventurous.

THE LIFESTYLE COLLECTION

LIVE ALL TERRAIN

Whether you're escaping the city or exploring it, the Land Rover collection is at home in every terrain. Distinctive and well crafted, it's a range of apparel and accessories designed for life, wherever it's lived.

MEN'S APPAREL

The all-terrain spirit of Land Rover continues in our menswear collection. Instilled with the same unrivalled versatility, it's ready for anywhere.

MEN'S HOODED RAIN JACKET

Take shelter seriously with this water-resistant jacket. Lined with breathable mesh, it features an adjustable hood and Land Rover perforation detailing and chamfering throughout. Finished with taped seams and Durable Water Repellent (DWR®) coating.

Navy - R2 314.29

XS	51LGJM452NVB	XL	51LGJM452NVF
S	51LGJM452NVC	XXL	51LGJM452NVG
M	51LGJM452NVD	XXXL	51LGJM452NVH
L	51LGJM452NVE	XXXXL	51LGJM452NV3

MEN'S APPAREL





MEN'S MODERN DRIVER'S JACKET

Be ready for every kind of road. This contemporary driver's jacket offers incredible versatility. Features quilted shoulders, branded poppers to the cuffs and a brushed-metal effect wordmark tag. Water-resistant zips and DWR® coating.

Black - R1 911.96

XS	51LGJM450BKB	XL	51LGJM450BKF
S	51LGJM450BKC	XXL	51LGJM450BKG
M	51LGJM450BKD	XXXL	51LGJM450BKH
L	51LGJM450BKE	XXXXL	51LGJM450BK3



MEN'S ZIP UP SOFTSHELL JACKET

Softshell made from a nylon elastane mix for ultimate protection and mobility. Features laser-cut Land Rover perforation detailing, and chamfering. With storm cuffs, a concealed hood and microfibre lined pockets for added warmth.

Navy - R1 710.54

XS	51LGJM451NVB	XL	51LGJM451NVF
S	51LGJM451NVC	XXL	51LGJM451NVG
M	51LGJM451NVD	XXXL	51LGJM451NVH
L	51LGJM451NVE	XXXXL	51LGJM451NV3



MEN'S CLASSIC SHIRT

Smart button-down collar shirt made from an easi-care cotton mix. Features welt pocket with pen section and tonal Land Rover wordmark. Contrast detailing to the buttons, placket, inner lining and cuffs.

Grey - R1 006.33

XS	51LGSM453GYB	XL	51LGSM453GYF
S	51LGSM453GYC	XXL	51LGSM453GYG
M	51LGSM453GYD	XXXL	51LGSM453GYH
L	51LGSM453GYE	XXXXL	51LGSM453GY3

MEN'S APPAREL



OVAL BADGE MESH BACK CAP

Comfortable and breathable cap with oval badge to the front. Features contrast piping and eyelets, Land Rover wordmark tape to the interior, rear mesh panels and an adjustable snapback.

Green - 51LGCH489GNA
R503.04



WORDMARK CAP

Two-tone cap with Land Rover wordmark. Features contrast peak and eyelets, wordmark tape to the interior and a branded metal adjuster.

Navy - 51LGCH455NVA
R402.58

**MENS ACCENT COLLAR POLO SHIRT**

100% cotton piqué polo shirt with contrast tipping to the collar and cuffs. Features Land Rover wordmark to the chest, concealed buttons, and a side tab with Land Rover perforation detailing.

Grey - R704.46

XS	51LGP456GYB	XL	51LGP456GYF
S	51LGP456GYC	XXL	51LGP456GYG
M	51LGP456GYD	XXXL	51LGP456GYH
L	51LGP456GYE	XXXXL	51LGP456GY3

**MEN'S ACCENT COLLAR POLO SHIRT**

100% cotton piqué polo shirt with contrast tipping to the collar and cuffs. Features Land Rover wordmark to the chest, concealed buttons, and a side tab with Land Rover perforation detailing.

Navy - R704.46

XS	51LGP456NVB	XL	51LGP456NVF
S	51LGP456NVC	XXL	51LGP456NVG
M	51LGP456NVD	XXXL	51LGP456NVH
L	51LGP456NVE	XXXXL	51LGP456NV3

**MEN'S RELIEF MAP T-SHIRT**

A cotton jersey crew neck T-shirt with high build topography graphic. Features Land Rover wordmark, twin-needle stitching to the hem and sleeves and a side tab with Land Rover perforation detailing.

Grey - R503.04

XS	51LGT457GYB	XL	51LGT457GYF
S	51LGT457GYC	XXL	51LGT457GYG
M	51LGT457GYD	XXXL	51LGT457GYH
L	51LGT457GYE	XXXXL	51LGT457GY3

**MEN'S RELIEF MAP T-SHIRT**

A cotton jersey crew neck T-shirt with high build topography graphic. Features Land Rover wordmark, twin-needle stitching to the hem and sleeves and a side tab with Land Rover perforation detailing.

Navy - R503.04

XS	51LGT457NVB	XL	51LGT457NVF
S	51LGT457NVC	XXL	51LGT457NVG
M	51LGT457NVD	XXXL	51LGT457NVH
L	51LGT457NVE	XXXXL	51LGT457NV3

WOMEN'S APPAREL

Always effortlessly stylish. Now enhanced with smart thermal technology. This collection of womenswear breaks new ground, wherever you wear it.

WOMEN'S QUILTED GILET

A tapered fit gilet designed to retain your body heat. Features thermal insulation, heat-welded panels and side pockets. With geometric graphic detail to the inner lining and upper back, silicone sports zip-pulls and printed Land Rover wordmark to the chest. Water-resistant with DWR® coating.

Navy - R1 811.25

8	51LGJW487NVI	16	51LGJW487NVM
10	51LGJW487NVJ	18	51LGJW487NVN
12	51LGJW487NVK	20	51LGJW487NV2
14	51LGJW487NVL		



WOMEN'S QUILTED JACKET

Combat the cold with this all-weather quilted jacket in a tapered fit. Features thermal insulation, heat-welded panels, high neck and side pockets. With geometric graphic detail to the inner lining and upper back, sports zip-pulls and Land Rover wordmark to sleeve. Water-resistant with DWR® coating.

Navy - R2 515.71

8	51LGJW486NVI	16	51LGJW486NVM
10	51LGJW486NVJ	18	51LGJW486NVN
12	51LGJW486NVK	20	51LGJW486NV2
14	51LGJW486NVL		



WOMEN'S APPAREL



WOMEN'S WORDMARK T-SHIRT

A cotton elastane jersey T-shirt in our new tapered fit. Features subtle Land Rover wordmark to the chest, twin-needle stitching, and a side tab with Land Rover perforation detailing.

Navy - R503.04

8	51LGTW484NVI	16	51LGTW484NVM
10	51LGTW484NVJ	18	51LGTW484NVN
12	51LGTW484NVK	20	51LGTW484NV2
14	51LGTW484NVL		



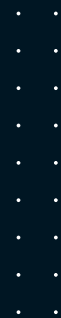
NECK WARMER

Ward off winter with this multifunctional unisex Neck Warmer. Made from performance poly-elastane, with topography graphic and Land Rover wordmark to the front.

Navy - 51LGSF459NVA

R301.88





GIFTS & LIFESTYLE

From high-performance pens to classic collectibles, gift beyond the ordinary with our exclusive range of Land Rover lifestyle accessories.

1. LANYARD

A smart Lanyard with contrast grey leather trim and lobster clasp. Features geometric graphic detail to one side and Land Rover wordmark to the other.

Navy - 51LGGF470NVA
R100.71

2. PERFORATED LEATHER LOOP KEYRING

A hard-wearing loop keyring made from fine leather. Features debossed Land Rover wordmark and perforation detailing, with bamboo colour stitching.

Navy - 51LGKR468NVA
Ivory - 51LGKR468IVA
R301.88

3. NYLON WALLET

Textured wallet with Land Rover wordmark and chamfering stitch detail. Features contrast grey interior with space for three cards and a coin pocket.

Navy - 51LGGF465NVA
R704.46

4. MATTE CERAMIC TRAVEL MUG

This double-walled ceramic travel mug features the Land Rover wordmark and silicone band around the middle.

Navy - 51LGMG491NVA
R301.88

5. MATTE STONEWARE MUG

Branded stoneware mug with a robust construction and a matte Navy finish. Features Land Rover wordmark and geometric graphic detail.

Navy - 51LGMG474NVA
R241.50

6. WATER BOTTLE / STAINLESS STEEL TRAVEL FLASK

Food grade travel flask with easy-grip surface. Features Land Rover wordmark and geometric graphic detail.

Navy - 51LGGF460NVA
R503.04



**LAND ROVER iPhone XS COVER**

iPhone case featuring geometric graphic detail and Land Rover wordmark. Made from hard plastic with a rubberised matte finish.

Navy - 51LGPH521NVA
R301.88

**LEATHER iPhone XS CASE**

Leather iPhone case, featuring foil Land Rover wordmark.

Navy - 51LGPH519NVA
R603.75

**POCKET UMBRELLA**

A Navy pocket-sized umbrella featuring the Land Rover wordmark.

Navy - 51LEUM282NVA
R503.04

**PREMIUM GOLF UMBRELLA**

Non-conductive fibreglass frame golf umbrella. Features vented canopy for additional wind resistance and Land Rover wordmark to the canopy edge.

Navy - 51LEUM123NVA
R704.46

**USB BATTERY POWER CHARGER**

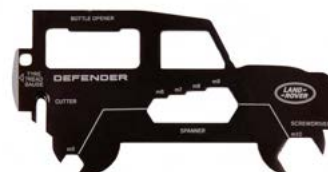
Anodised aluminium USB power charger with laser-engraved Land Rover wordmark and geometric graphic detail. Includes 3-in-1 cable with micro, lightning and type C connectors. 8000mAh external battery.

Navy - W 74mm H 150mm D 11.8mm
51LGPH473NVA
R704.46

**LEATHER WRAPPED iPhone CABLE**

USB cable for iPhone with leather casing in Navy. Includes 3-in-1 cable with micro, lightning and type C connectors. With Land Rover wordmark and oval badge on the connectors. MFI certified.

Navy - 51LGPH495NVA
R503.04

**DEFENDER MULTI TOOL**

Black steel credit card sized multi tool crafted into a Defender silhouette. Features a range of practical tools including tyre tread gauge.

Black - 51LDTT619NVA
R241.50

**TRAVEL MUG STAINLESS STEEL**

This stainless steel travel mug features an easy to grip silicone band around the middle and Terrain Response® branding.

Navy - 51LGMG915NVA
R301.88



RELIEF MAP TOTE BAG

Reusable canvas tote bag with topography graphic in contrast navy. Features Land Rover wordmark to the front.

Ecru - 51LGLU461WTA

R100.71



NOTE BOOK LARGE A5

A notebook to travel with. Featuring Land Rover wordmark and perforation detailing to the front cover. With matching elastic strap and bookmark ribbon.

Navy - 51LGNB517NVA

R241.50

CARRAN D'ACHE FOR LAND ROVER BALLPOINT PEN

Embodying the true spirit of Land Rover, these durable writing instruments have been designed in collaboration with renowned Swiss stationer, Carran d'Ache. Made from anodised aluminium and finished in a choice of three Land Rover colours, these are pens that never fail to impress.

Orange - 51LFPN369ORA

Black - 51LFPN369BKA

Gunmetal - 51LFPN369GUA

R704.46



LAND ROVER SOLAR WATCH

A new generation solar-powered chronograph with 3 auxiliary sub-dials. Fitted with high-resistance mineral glass and a rubber strap for active use. Features power reserve indicator, orange detailing and Land Rover wordmark. Supplied in Land Rover presentation box.

Black - 51LHWM976BKA

R5 534.46

CHILDREN'S TRICYCLE

All the fun on three wheels. This sturdy single-tube trike with multi-use platform will be their vehicle of choice for every adventure. Finished in Tectonic Grey with Orange front fork. Suitable for children aged 2-5 years.
Grey - 51LFBK364GYA
R2 012.42



GIFTS & LIFESTYLE



RANGE ROVER RIDER RIDE ON

This ride-on car with working front and rear LED lights features low-noise tyres and a soft-touch seat for comfort. Suitable for children aged 18-36 months. Lights powered by 3 x AA batteries (not included).
White - 51LDY926WTA
Red - 51LDY926RDA
R3 119.46



• •
• •
• •
• •
• •
• •
• •
• •
• •
• •

LUGGAGE

Our state-of-the-art luggage is made for exploring new lands and new opportunities. When the adventure never ends, it's the place to start.



NYLON HOLDALL

Whatever you're packing for, you'll be well prepared with this Nylon Holdall. This versatile bag with padded shoulder strap, internal pockets and compartments, features Land Rover chamfering and wordmark branding to the front panel and is finished with bamboo colour trim and zip-pulls. Navy - 51LGLU462NVA
R1 811.25



NYLON BRIEFCASE

All-purpose briefcase with 16" protective laptop sleeve. Features quilted panelling on both sides, bamboo colour trim and Land Rover chamfering, with wordmark to the front panel and padded shoulder strap. Navy - 51LGLU464NVA
R1 811.25

NYLON RUCKSACK

Versatile rucksack with internal organiser and 16" protective laptop sleeve. Features quilted panelling on both sides, bamboo colour trim and zip-pulls, with Land Rover chamfering and wordmark to the front.

Navy - 51LGLU463NVA
R1 408.67

LUGGAGE





LAND ROVER BUSINESS HARD CASE

Taking design cues from our Land Rover skid plate, this business case in Graphite Grey is ready for whatever the workday brings. A polycarbonate shell, an aluminium frame and TSA-approved locks mean important documents are always kept secure. An insert badge to the front and a woven wordmark to the inner lining add style, while more practical touches include several internal compartments and an extendable handle.

Business - 51LELU261GYA
W 45cm H 35cm D 20cm
Graphite Grey - R3 521.79

LAND ROVER HARD CASE SUITCASES

Taking design cues from our Land Rover skid plate, these hard cases in Graphite Grey are as resilient and adventure-ready as our vehicles. A polycarbonate shell, aluminium frame and TSA-approved locks mean you'll always travel securely. An insert badge to the front and a woven wordmark to the inner lining add style, while practical touches include several internal compartments and multidirectional tour wheels.

Small - 51LELU262GYA
W 35cm H 55cm D 23cm
Graphite Grey - R4 528.13

Medium - 51LELU263GYA
W 46.5cm H 68cm D 26cm
Graphite Grey - R5 534.46

Large - 51LELU264GYA
W 50.6cm H 73cm D 34cm
Graphite Grey - R6 037.50

SUNGLASSES

With anti-glare technology and high UV protection, our Land Rover branded sunglasses mean you can look forward to every horizon.



1. LAND ROVER NEVIS SUNGLASSES

Purposely designed to reduce visual glare, these next generation Nevis Sunglasses feature a subtle Land Rover wordmark to the frame.

Gunmetal - 51LEGM373GYA

R2 515.75 LIMITED AVAILABILITY

2. LAND ROVER LONGNOR SUNGLASSES

Reflecting Land Rover's British heritage, these Longnor Sunglasses feature a distinctive British style hinge with a textured frame in Green and Grey.

Green / Grey - 51LEGM370GNA

R2 515.75 LIMITED AVAILABILITY

3. LAND ROVER SNOWDON SUNGLASSES

Utilising innovative matte acetate materials and protective polarised OBEXTM mirror lenses, these Snowdon Sunglasses have been crafted for an active, outdoor lifestyle.

Tortoiseshell - 51LEGM377BNA

R3 018.75 LIMITED AVAILABILITY

4. LAND ROVER USK SUNGLASSES

A sophisticated style suited for all occasions, these Usk Sunglasses feature a modern eye shape with the Land Rover wordmark to the lens.

Black - 51LEGM379BKA

R2 515.75 LIMITED AVAILABILITY

5. LAND ROVER SCAPELL SUNGLASSES

Ideal for the rugged adventurer, the Scafell Sunglasses have a monobloc construction with a fitted wrap-around frame and OBE hinges.

Blue - 51LEGM376BLA

R2 515.71 LIMITED AVAILABILITY

6. LAND ROVER MERRICK SUNGLASSES

Made from premium acetate and crafted with a flex hinge and mirror lenses. These components work to create a sleek and masculine frame. The ideal outdoors accessory.

Black - 51LEGM371BKA

R3 018.75 LIMITED AVAILABILITY

RANGE ROVER COLLECTION
REFINEMENT REDEFINED



Refinement is all in the details. It's a story told in the quality of our materials and our sophisticated design. Something you can see in our exclusive range of lifestyle accessories, inspired by the luxurious Range Rover interiors. It's more than refinement. It's refinement redefined.



RANGE ROVER WATCH

A refined watch inspired by the classic Range Rover marque. Featuring black sun-ray dial and Milanese strap. Ultra-thin black gloss design with quartz movement. Supplied in high gloss piano black branded watch box. Water-resistant to 5 ATM. Black - 51LHWM973BKA
R7 043.83





RANGE ROVER LEATHER WALLET

An elegant cross-grained leather wallet in Deep Garnet with chevron print to the inner lining. Features Range Rover Rotary Dial detail with debossed wordmark to the inside.

Deep Garnet - 51LGLG419BUA
R1 408.67

RANGE ROVER CARD CASE

Cross-grained leather card case in Deep Garnet with four card slots and a centre note compartment. Features Range Rover Rotary Dial detail with debossed wordmark to the reverse.

Deep Garnet - 51LGLG420BUA
R905.63

RANGE ROVER CUFFLINKS

A refined set of whale-back cufflinks inspired by the Range Rover Rotary Dial and crafted from milled steel. With a Black nickel finish and debossed wordmark.

Black - 51LGCL417BKA
R1 207.50



UNISEX RANGE ROVER CAP

Stylish Range Rover headwear. Created in tandem with our vehicle design studio. Sharp black trim. Chevron stitching. 3D metal effect branding. Fully adjustable with high quality gunmetal hardware. Black - 51LHCH961BKA
R603.75



RANGE ROVER SUNGLASSES - RRS103 SILVER

Lightweight aviator-style sunglasses in Silver. Machined from a single sheet of Japanese Beta-titanium, with NXT® polarized lenses for ultimate UV protection and colour clarity. Other styles available. Silver - 51LGGM523SLA
R5 534.46



RANGE ROVER LEATHER HOLDALL

True style is never overstated. This classic holdall is fashioned from supple full-grained leather. Featuring a discreet Range Rover wordmark, soft interior lining and a detachable shoulder strap. Finished with leather zip-pulls, gunmetal hardware and trim. Black - 51GLU455BKA
R7 949.46



RANGE ROVER LEATHER TOTE BAG

Style, simplicity, sophistication. It all comes to the fore with this cross-grained leather tote bag in Deep Garnet. Featuring a chevron print lining with an easy-to-reach internal key pocket, its design is understated yet unmistakable. Subtle branding includes a Range Rover Rotary Dial detail with magnetic closure, and a debossed wordmark to the reverse.
Deep Garnet - 51LGLX423BUA
R5 936.79

RANGE ROVER LEATHER FLAP PURSE

Cross-grained leather purse in Deep Garnet with eight card slots and an internal zip pocket. Features Range Rover Rotary Dial detail with concealed press stud, and debossed wordmark to the reverse.
Deep Garnet - 51LGLG422BUA
R1 911.96

RANGE ROVER COLLECTION

MONTEGRAPPA FOR RANGE ROVER PEN

Made from a robust polymer with a sleek Black finish, this premium pen features the technical detailing of our Sports Utility Vehicle. Designed by Land Rover and made by Montegrappa, the first Italian designer of superior writing instruments, each pen is a fine example of craftsmanship and style.

Black - 51LFPN376BKA

R7 949.46



RANGE ROVER UMBRELLA

Your cover for all conditions. This wind-tested Range Rover Umbrella features a black leather handle with debossed Range Rover wordmark, spring-loaded automatic opening and polycotton canopy.

Black - 51LEUM144BKA

R1 297.50



RANGE ROVER ROUND KEYRING

Crafted from milled steel, this distinctive keyring is inspired by the Range Rover Rotary Dial. With a Black nickel finish and debossed wordmark to the outer ring edge.

Black - 51LGKR416BKA

R905.63

CLOTHING SIZE GUIDE

UK MEN'S	CHEST (CM)
XS	88
S	92
M	97
L	102
XL	107
XXL	112
XXXL	117
XXXXL	122

UK WOMEN'S	BUST (CM)
8	77
10	82
12	87
14	92
16	97
18	102
20	107

Product availability and pricing are subject to change. All copy and images remain the copyright of Jaguar Land Rover. Correct at time of publication; subject to availability and market; Jaguar Land Rover reserve the right to remove or change specification of items in the range at any time.





THE ABOVE AND BEYOND COLLECTION



ABOVE & BEYOND



DESIGNED TO ENDURE

The new Land Rover Defender goes above and beyond. And now there's a collection to match. A collaboration between Land Rover and Musto that's rugged and innovative, it's designed to take you anywhere and take on anything. Made from strong and resilient materials. Crafted with technical precision. And tested in real-world conditions. It's what endurance is made of.



RODINIA HYBRID JACKET

SHIELDS

Showerproof and versatile, this softshell jacket is a defence against the elements. Designed with quick burst zip technology that allows you to remove the sleeves in a single movement, turning it from jacket to gilet in seconds. Featuring fast-drying Durable Water Repellent (DWR®) treated fabric and PrimaLoft® eco-insulation for compressible warmth.

MEN'S RODINIA HYBRID JACKET

Black - R6 425.10

LIMITED AVAILABILITY

XS	51LGJM371BKB	XL	51LGJM371BKF
S	51LGJM371BKC	XXL	51LGJM371BKG
M	51LGJM371BKD	XXXL	51LGJM371BKH
L	51LGJM371BKE		

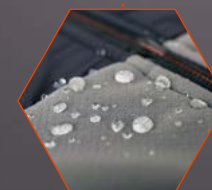
Reflective prints feature glass bead technology.



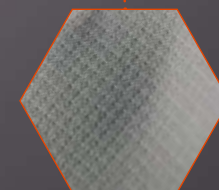
Reverse coil, bi-colour YKK zip.



Quick burst zips for easy sleeve removal.



Durable Water Repellent (DWR®) coating.



Constructed from ultra-resistant Schoeller® stretch fabric.



Concealed pocket for sleeve stowage.



PrimaLoft® Black Eco recycled insulation.

WOMEN'S RODINIA HYBRID JACKET
Black - R6 425.10

8	51LGJW377BKI	14	51LGJW377BKL
10	51LGJW377BKJ	16	51LGJW377BKM
12	51LGJW377BKK	18	51LGJW377BKN



MEN'S & WOMEN'S JACKET FEATURES

- Constructed from abrasion-proof Schoeller® stretch fabric.
- Durable Water Repellent (DWR®) coating allows water to bead and run off for faster drying times.
- PrimaLoft® Black Eco recycled insulation for eco-friendly, lightweight and compressible warmth.
- Ergonomic YKK zip with reverse coil construction.
- Reflective prints feature glass bead technology for enhanced visibility.
- Quick burst zip technology transforms jacket into gilet.
- Concealed pocket for stowing removable sleeves.



SCORIA TECH MID LAYER

Cold weather comfort. Casual style. The ultimate mid layer for outdoor activities. Rugged and warm with a water-repellent finish. Featuring a 4-way stretch construction for unrivalled flexibility and comfort. Complete with orange shock-cords to the hood.



MEN'S SCORIA TECH
MID LAYER

MEN'S SCORIA TECH MID LAYER
Grey - R2 940.34

XS	51LGHM372GYB	XL	51LGHM372GYF
S	51LGHM372GYC	XXL	51LGHM372GYG
M	51LGHM372GYD	XXXL	51LGHM372GYH
L	51LGHM372GYE		

MEN'S & WOMEN'S JACKET FEATURES

- Durable Water Repellent (DWR®) coating.
- Glass bead technology.
- 4-way stretch construction.



WOMEN'S SCORIA TECH
MID LAYER

WOMEN'S SCORIA TECH MID LAYER
Grey - R2 583.88

8	51LGHW378GYI	14	51LGHW378GYL
10	51LGHW378GYJ	16	51LGHW378GYM
12	51LGHW378GYK	18	51LGHW378GYN



TEPHRA GORE-TEX SHELL PARKA

Endure the extremes. The tech-packed, triple-layer parka is the ultimate protective garment. Featuring a precision-engineered construction that provides superlative wind and waterproof performance.



MEN'S TEPHRA GORE-TEX
SHELL PARKA

MEN'S TEPHRA GORE-TEX SHELL PARKA

Black - R7 623.19

LIMITED AVAILABILITY

XS	51LGJM368BKB	XL	51LGJM368BKF
S	51LGJM368BKC	XXL	51LGJM368BKG
M	51LGJM368BKD	XXXL	51LGJM368BKH
L	51LGJM368BKE		



MEN'S & WOMEN'S JACKET FEATURES

- 3-layer GORE-TEX laminate provides superior weatherproofing and breathability.
- Durable Water Repellent (DWR®) coating.
- Water-resistant YKK zips with AquaGuard® (Coil).
- Embedded COHÆSIVE™ cord locks for easy, one-handed adjustment.
- Cargo pockets feature water deflecting top closures.
- Reflective prints feature glass bead technology for enhanced visibility.
- Two-way adjustable hood.



WOMEN'S TEPHRA GORE-TEX
SHELL PARKA

WOMEN'S TEPHRA GORE-TEX SHELL PARKA

Black - R7 623.19

LIMITED AVAILABILITY

8	51LGJW374BKI	14	51LGJW374BKL
10	51LGJW374BKJ	16	51LGJW374BKM
12	51LGJW374BKK	18	51LGJW374BKN



WELDED THERMO JACKET

Insulation meets innovation in this ultrasonic Welded Thermo Jacket. Constructed with PrimaLoft® insulation fused with Aerogel for the performance of natural down. Seamless design. Unsurpassed comfort. And peerless durability in all terrains.



MEN'S WELDED
THERMO JACKET

MEN'S WELDED THERMO JACKET

Black - R7 623.19

XS	51LGJM370BKB	XL	51LGJM370BKF
S	51LGJM370BKC	XXL	51LGJM370BKJ
M	51LGJM370BKD	XXXL	51LGJM370BKH
L	51LGJM370BKE		



MEN'S & WOMEN'S JACKET FEATURES

- 3-layer waterproof shell fabric with polyester face.
- Equipped with a RECCO® integrated reflective antenna that helps rescue teams locate you in difficult terrain.
- PrimaLoft® Silver insulation provides warmth of natural down without the weight.
- PrimaLoft® Aerogel-lined pocket keeps mobile phones charged for longer.
- Embedded COHÆSIVE™ cord locks for easy, one-handed adjustment.
- Reflective prints feature glass bead technology for enhanced visibility.



WOMEN'S WELDED
THERMO JACKET

WOMEN'S WELDED THERMO JACKET

Black - R7 623.19

LIMITED AVAILABILITY

8	51LGJW376BKI	14	51LGJW376BKL
10	51LGJW376BKJ	16	51LGJW376BKM
12	51LGJW376BKK	18	51LGJW376BKN



LITE GORE-TEX PACKABLE JACKET

Feather-light. Fully stowable. This jacket is made from highly breathable GORE-TEX fabric. An articulated construction with fully-taped seams, it ensures superior waterproof protection. A form-fitting jacket for high-intensity activities.



MEN'S LITE GORE-TEX
PACKABLE JACKET

MEN'S LITE GORE-TEX PACKABLE JACKET Black - R4 900.56

XS	51LGJM369BKB	XL	51LGJM369BKF
S	51LGJM369BKC	XXL	51LGJM369BKG
M	51LGJM369BKD	XXXL	51LGJM369BKH
L	51LGJM369BKE		



MEN'S & WOMEN'S JACKET FEATURES

- Constructed from ultra-breathable GORE-TEX Active fabric.
- Fully waterproof with taped seams.
- Packs away into pocket for easy attachment to belt loops and bags.
- Reflective prints feature glass bead technology for enhanced visibility.
- Durable Water Repellent (DWR®) coating.
- Embedded COHÆSIVE™ cord lock for easy adjustment.



WOMEN'S LITE GORE-TEX
PACKABLE JACKET

WOMEN'S LITE GORE-TEX PACKABLE JACKET Black - R4 900.56

8	51LGJW375BKJ	14	51LGJW375BKL
10	51LGJW375BKJ	16	51LGJW375BKM
12	51LGJW375BKK	18	51LGJW375BKN



REVERSIBLE BASE LAYER

A Reversible Base Layer that adapts to the seasons. Made with thermal regulating merino fabric on one side and breathable polyester fabric on the other. Featuring flatlocked seams with black reflective prints and glass bead technology for enhanced low-light visibility.



MEN'S REVERSIBLE
BASE LAYER

MEN'S REVERSIBLE BASE LAYER Grey - R1 633.52

XS	51LGT373GYB	XL	51LGT373GYF
S	51LGT373GYC	XXL	51LGT373GYG
M	51LGT373GYD	XXXL	51LGT373GYH
L	51LGT373GYE		



MEN'S & WOMEN'S BASE LAYER FEATURES

- Merino fabric provides thermal regulation, wicking and anti-odour properties.
- Reverse side features polyester fabric that's breathable, wicking and fast-drying.
- UPF 30 sun protection.
- Reflective prints feature glass bead technology for enhanced visibility.
- Water-resistant pocket for phone.



WOMEN'S REVERSIBLE
BASE LAYER

WOMEN'S REVERSIBLE BASE LAYER Black - R1 633.52

8	51LGTW379BKI	14	51LGTW379BKL
10	51LGTW379BKJ	16	51LGTW379BKM
12	51LGTW379BKK	18	51LGTW379BKN

LAND ROVER MUSTO LOGO T-SHIRT

A timeless T-shirt. An iconic accessory. Featuring a distinctive topographic logo and orange piping to the neck. Made from breathable cotton.

FEATURES

- Topographic logo design.
- Features contrast piping.
- 100% soft cotton jersey.



Grey - R603.75

S	51LHTM947GMC	XL	51LHTM947GMF
M	51LHTM947GMD	XXL	51LHTM947GMG
L	51LHTM947GME		

LAND ROVER MUSTO LOGO HOODIE

Casual hoodie. Classic design. This stylish mid layer comes in Gunmetal Grey with distinctive orange detailing. Featuring topographic logo to the front. Made from 100% cotton.

FEATURES

- Jersey-lined hood in contrast orange.
- Ideal layer for outdoor activity.
- 100% cotton loop-back fabric.



Gunmetal Grey - R1 610.00

S	51LHHM454GUC	XL	51LHHM454GUF
M	51LHHM454GUD	XXL	51LHHM454GUG
L	51LHHM454GUE		



ABOVE AND BEYOND BEANIE

Simple. Subtle. Essential. A double-layered beanie that offers twice the protection in the great outdoors. Designed with a reflective label and turned-up cuff. Headwear that prepares you for anything.

FEATURES

- Double layered for warmth.
- Comfortable ribbed construction.
- Reflective branded label.

Black - R402.50

51LHCH458BKA



ABOVE AND BEYOND SUNGLASSES

Technically proficient sunglasses with cutting-edge design. Made from ultra-light Grilamid Polyamide. Featuring single-mould frames with matte finish and 100% UVA, UVB and UVC protection. Supplied in a durable Land Rover travel case.

Orange lens - R2 716.88

51LG6M9450RA

Brown lens - R2 716.88

51LG6M944MXA

FEATURES

- Polarised lenses with matte-finish frames.
- Constructed with UV400 filter.
- Integrated grip on temples.
- Rugged outdoor case featuring Above and Beyond zip-pulls.
- Also available with Smoked Grey frames and Brown lenses.



ABOVE AND BEYOND BLIZZARD COAT

PROTECTS

The ultimate defence for dogs. This technical outer layer protects dogs against the cold and the wet. Features weatherproof outer made from black hexagon nylon. With 4 layers for superior warmth, and 4 reflective points for low-light visibility. Designed for easy adjustment and a precision fit.

FEATURES

- Tail opening.
- Leather strap.
- Reflective stitching.

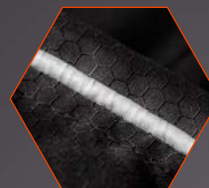
Black and Orange

AVAILABLE JANUARY 2021

S	51LPT938MXC	- R805.00
M	51LPT938MXD	- R905.63
L	51LPT938MXE	- R1 006.25
XL	51LPT938MXF	- R1 106.88



Reflective piping for low-light visibility.



3 point adjustment for perfect fit.



Silicone moulded badge.



Waterproof nano-treated outer.



Micro-fleece base layer for superior warmth.



Underbody protection.



ABOVE AND BEYOND DOG HARNESS

Next generation harness. Designed for comfort and made with hard-wearing components. Featuring fully-padded body with breathable mesh lining. Includes sports buckle, padded traffic handle and rust-resistant nickel D-ring.

FEATURES

- High-resistance hexagon jacquard nylon.
- Fully adjustable for a secure fit.
- Removable chest pad for ease of movement.
- Reflective print and piping.
- Attachment loops for accessories.

Black and Orange

AVAILABLE JANUARY 2021

S	51L6PT937MXC - R603.75
M	51L6PT937MXD - R704.38
L	51L6PT937MXE - R805.00



ABOVE AND BEYOND ADJUSTABLE DOG LEAD

Designed for visibility. Woven for endurance. This adjustable dog lead with bungee cord is created for all-round versatility. Features a padded handle, Land Rover branding and reflective piping for visibility in low light.

FEATURES

- Traffic handle for close control.
- Shock absorbing cord.
- Land Rover utility clip on handle.

Black and Orange - R503.13

AVAILABLE JANUARY 2021

51L6PT939MXA



ABOVE AND BEYOND PORTABLE PET BOWL

A lightweight foldaway solution for dogs on the move. 1.5 litre capacity ideal for holding food and liquids. Made with rugged black nylon straps. Stands upright. Packs away easily. Convenient to transport and clean.

FEATURES

- Lightweight solution for feeding and drinking.
- Rolls up easily into bag.
- Sturdy, water-resistant construction.

Black and Orange - R301.88

AVAILABLE JANUARY 2021

51L6PT942MXA



ABOVE AND BEYOND REFLECTIVE DOG COLLAR

Modern collar. Comfort fit. A technical dog collar for outdoor adventures. Features secure construction, with a nylon outer weave for endurance, and neoprene padding for comfort. Designed with reflective orange piping and handy utility clip.

FEATURES

- Made from hard-wearing materials.
- Designed for maximum comfort.
- Hook and loop adjustment.
- Reflective stitching for increased visibility in low light.

Black and Orange

AVAILABLE JANUARY 2021

S 51L6PT940MXC - R301.88
M 51L6PT940MXD - R342.13
L 51L6PT940MXE - R382.38



ABOVE AND BEYOND DOG TOY

A toy made to go the distance. Featuring a detailed tread pattern replicating the Land Rover tyre. Safe, durable and designed to gently clean teeth.

FEATURES

- Made from reinforced material.
- Bouncy, lightweight and hard-wearing.

Black - R243.41

AVAILABLE JANUARY

2021 51L6PT941BKA



ABOVE AND BEYOND
FUNCTIONAL ACTIVITY BELT

SECURES

Rugged, reliable and remarkably strong. Featuring an ultra-robust webbing construction with a tensile strength of 6000kg. Fitted with a hard-wearing HYPALON™ stopper. And secured with the world's safest and strongest ANSI COBRA® buckle. A belt that goes beyond the call of duty when you have to.

Black - R1 710.45

S/M 51L60F382BK4
L/XL 51L60F382BK6

HYPALON™ stopper
for heavy-duty
outdoor use.

WIDTH
38mm

WEBBING TENSILE STRENGTH
6000kg

SECURED BY AN
**ANSI
COBRA®**
BUCKLE



Features an ANSI
COBRA® buckle:
the world's safest
and strongest buckle.



Ultra-robust webbing
construction.



MIROVIA SEAM SEALED BACKPACK

HAULS

The go-anywhere, take-anything backpack. Constructed from 500D PVC material chosen for its uncompromising quality and significant strength. Designed with a large roll-top and heat-sealed seams to keep moisture out. Complete with HYPALON™ lashing points and a release valve for compact packing.

FEATURES

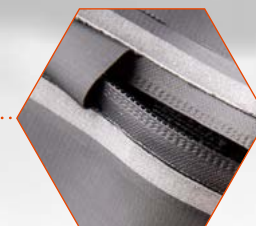
- 500D PVC material and heat-sealed seams defend contents against water damage.
- 25 litre main compartment with computer pocket for safer storage.
- Exterior features HYPALON™ lashing points.
- Finished with reflective print for superior visibility.
- Hard-wearing valve releases pressure for compact packing.

Black - R2 314.29

51L6LU385BKA



Features robust 500D PVC material and heat-sealed seams.



25 litre main compartment with computer pocket.



Stitched HYPALON™ lashing points.



Integrated release valve aids compact packing.



ABOVE AND BEYOND FLASK

SUSTAINS

This robust, double-walled steel flask keeps liquids cold for up to 24 hours and hot for up to 15 hours. Featuring an easy-grip design that can be held with gloves. Durable and rugged with a nylon cord for easy attachment.

Black - R704.46

51L6GF393BKA

KEEPS LIQUIDS COLD FOR UP TO

24hrs

KEEPS LIQUIDS HOT FOR UP TO

15hrs

CAPACITY

500ml



Features easy-pour lid with removable drinking cup.



Waterproof seals for secure transportation of liquids.



Double-walled steel flask means liquid maintains its temperature for longer.



Ergonomic barrel designed for superior grip.



Nylon cord for easy attachment.



LEROVA TRAVEL WALLET

This durable travel wallet is built to safeguard your essentials from the elements. 23cm x 3cm x 12cm.

FEATURES

- Rugged, water-resistant construction.
- Protects your items from water damage.
- Attaches to bags and belt loops with hard-wearing carabiner.

Black - R804.92

51L6LU383BKA



ABOVE AND BEYOND WATER BOTTLE

A technical water bottle with easy-grip exterior. Constructed from Borosilicate glass that is resistant to thermal shock, it can be easily attached to travel bags. Super durable and expedition friendly.

FEATURES

- Silicone sleeve.
- Liquid volume marker.
- Watertight lid.
- Anti-slip base.

Black - R603.75

51L66F392BKA



ABOVE AND BEYOND BLUETOOTH SPEAKER

Waterproof. Travel-ready. This multi-function Bluetooth speaker is compact enough to take anywhere. And tough enough to take the knocks. 18cm x 5cm x 8cm.

FEATURES

- Reinforced portable construction.
- Impact resistant and dustproof.
- Carabiner attaches to bags.
- NFC pairing. USB charging.
- Doubles as power bank and mobile speakerphone.
- 12 hour battery.
- Waterproof to 1 metre IP67.

Black - R1 610.08

51L66F395BKA



Hooks on to bag with a carabiner.



ABOVE AND BEYOND CAP

Enhanced breathability and low-light visibility. This quick-drying cap is designed to keep you comfortable, and put your performance first come rain or shine.

FEATURES

- UPF 40 sun protection.
- Open mesh side panels.
- 3M reflective accents and branding.
- Quick-dry fabrics and ventilation.
- Reflective print to the rear.

Black - R603.75

51LGCH380BKA



ABOVE AND BEYOND MICROFIBRE ACTIVE TOWEL

Pack light. Stay dry. This branded microfibre active towel is made from a high-wicking polyester blend that's light, fast-drying and easy to store.

FEATURES

- High-wicking polyester blend.
- Branded print to one side and orange trim.
- Easy storage in a drawstring pouch.
- Unfolded Size: 110cm x 65cm.
- Folded Size: 16cm x 20cm.

Black - R603.75

51LGGF386BKA



ABOVE AND BEYOND MULTI TECH GLOVES

Dynamic movement. Resilient protection. These performance gloves are lightweight, versatile and can be easily adjusted for a tailored fit. Tested extensively by Land Rover Experience for a multitude of outdoor uses.

FEATURES

- Raised silicone print for enhanced grip.
- Hard-wearing construction.
- Conductive finger-pads for use on any touchscreen device.
- Breathable, anatomical comfort.
- Velcro adjuster on neoprene cuffs.

Black - R1 106.79

S/M 51LGVM381BK4
L/XL 51LGVM381BK6



Conductive finger-pads work on touchscreens.



ABOVE AND BEYOND MULTI TOOL

ADAPTS

Does everything. Goes anywhere. This handy tool has been designed for hard-wearing use both on and off road. Features 9 individual tools made from reinforced stainless steel.*

FEATURES

- Spring-action pliers.
- Knife with safety lock.
- Bottle opener.
- Serrated blade.
- Phillips screwdriver.
- Can opener.

Orange - R804.92

51L66F388BKA



ABOVE AND BEYOND POCKET MULTI TOOL

Pocket-sized and packed with tools. This all-in-one pocket multi tool is made from stainless steel and reinforced with a black aluminium cover. Small, sleek, but seriously useful.*

FEATURES

- Pliers.
- Bottle opener built into cutter.
- Carabiner attaches to bags.
- Phillips screwdriver.
- Knife with safety lock.

Black - R603.75

51L66F391BKA



*Minimum age limit applies.

ABOVE AND BEYOND FOLDING SHOVEL

A tool to travel with. The all-terrain shovel folds down into a portable size. Its sturdy construction and serrated edge make light work of the toughest tasks. Finished with laser engraved branding.

FEATURES

- Reinforced folding shovel designed for easy storage.
- Easy-grip.
- Dual edged for multi-purpose use.
- Rigid handle for leverage and durability.

Black - R603.75

51L66F397BKA



LAND ROVER X ELLIOT BROWN
HOLTON PROFESSIONAL WATCH

ENDURES

Designed by experts. Used by professionals. This exclusive timepiece, created in collaboration with premium English watchmaker Elliot Brown, offers precision timekeeping and unrelenting durability. Featuring scratch-resistant sapphire crystal, unidirectional bezel and luminous dial and hands. With two straps for all-terrain versatility. Shock resistant. Triple-sealed for water protection. And capable of prolonged exposure to the elements. It's a watch that knows no limits.

FEATURES

- 43mm case.
- Tested in water at 200m.
- Screw-down triple-sealed crown.
- Rubber strap resistant to temperature extremes.
- Super-LumiNova luminous hands and dial markings.

Black - R10 042.29

51LHWM992BKA



High grip uni-directional bezel.



Ultra shock-resistant casing.



Technical webbing strap.



Fitted soft rubber strap.

TESTED IN WATER AT

200m

SHOCK-RESISTANT TO

5,000G

CASE

43mm



LEGO® TECHNIC™ LAND ROVER DEFENDER 90

INSPIRES

Iconic. Authentic. Experience legendary vehicle design first hand with this LEGO® Technic™ Land Rover Defender. Developed in partnership with LEGO®. Suitable for age 11+. 2,573 pieces. Measures over 8" (22cm) high, 16" (42cm) long and 7" (20cm) wide.

Green - R2 999.99

51L60F397MXA

TO PURCHASE VISIT SHOP.LANDROVER.COM/UK

Bodywork features Land Rover logo, removable roof rack with storage box, pannier, ladder and traction mats, opening doors, hood and tailgate, plus a detailed interior.



Lift the bonnet to see the detailed in-line 6-cylinder engine with moving pistons.



Functions include working steering, All Wheel Drive with 3 differentials, independent suspension on both axles and a working winch.



Turn the rear-mounted spare wheel to open the tailgate.



4-speed sequential gearbox and gear selector with 2 levers for engaging high or low gear.

SCALE MODELS

The new Land Rover Defender represents over 70 years of innovation. This range of scale models captures all their rugged, iconic style. Made from high quality materials. Rich with detail and infused with a legendary history.



DEFENDER 90 FIRST EDITION SCALE MODEL 1:43

Collectors' edition replica of the new Land Rover Defender 90 in Pangea Green with contrast roof. High quality diecast model made from zinc alloy.

Pangea Green - R1 006.33

AVAILABLE JANUARY 2021

51LGDC921GNY



DEFENDER 110 EXPLORER PRO SCALE MODEL 1:43

Collectors' edition replica of the new Land Rover Defender 110 with Explorer Pro accessory pack in Indus Silver. High quality diecast model made from zinc alloy.

Indus Silver - R1 006.33

AVAILABLE JANUARY 2021

51LGDC922SLY



DEFENDER 110 X SCALE MODEL 1:43

Collectors' edition replica of the new Land Rover Defender 110 X in Gondwana Stone. High quality diecast model made from zinc alloy.

Gondwana Stone - R1 006.33

AVAILABLE JANUARY 2021

51LGDC953BNY



CLOTHING FEATURES GUIDE



RODINIA HYBRID JACKET

PRIMALOFT.

DWR

ABRASION
RESISTANCE

PRIMALOFT.
AEROGEL

YKK
QUICKBURST

MODULAR
SYSTEMS



SCORIA TECH MID LAYER

DWR

GLASSBEAD
TECHNOLOGY



TEPHRA GORE-TEX SHELL PARKA

GORE-TEX®

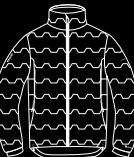
DWR

GLASSBEAD
TECHNOLOGY

Cohæsive™
EMBEDDED COMPONENTS

THREE LAYER SHELL

TAPED SEAMS



WELDED THERMO JACKET

Cohæsive™
EMBEDDED COMPONENTS

DWR

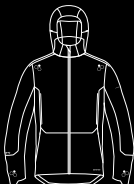
GLASSBEAD
TECHNOLOGY

ULTRASONIC
WELDING

PRIMALOFT.
AEROGEL

PRIMALOFT.
CROSS CORE
TECHNOLOGY

RECCO®



LITE GORE-TEX PACKABLE JACKET

GORE-TEX®

DWR

GLASSBEAD
TECHNOLOGY

Cohæsive™
EMBEDDED COMPONENTS

PACKABLE

TAPED SEAMS



REVERSIBLE BASE LAYER

Reversible

HYBRID

30
UPF THIRTY

GLASSBEAD
TECHNOLOGY

CLOTHING SIZE GUIDE

UK MEN'S	CHEST (CM)
XS	79 - 84
S	86 - 91.5
M	94 - 99
L	101.5 - 106
XL	109 - 114
XXL	117 - 122
XXXL	125 - 130

UK WOMEN'S	BUST (CM)
8	78.5 - 81
10	82 - 86
12	87 - 91.5
14	92 - 96.5
16	97 - 101.5
18	102 - 106.5

Product availability and pricing are subject to change. All copy and images remain the copyright of Jaguar Land Rover. Correct at time of publication; subject to availability and market; Jaguar Land Rover reserve the right to remove or change specification of items in the range at any time.



THE HERITAGE COLLECTION



ABOVE & BEYOND



THE ICON LIVES ON

In 1948, Maurice Wilks and his brother Spencer unveiled the world's first Land Rover. Over 70 years later, what began life as a sketch in the sands of Anglesey has become an international symbol of adventure. An icon that lives on with our Heritage Collection. Apparel and lifestyle accessories inspired by Land Rover's rich heritage, and made to last for generations to come.

MEN'S HERITAGE GRAPHIC T-SHIRT

100% cotton T-shirt with Heritage logo to the chest. Features back neck woven label and wordmark side tab. Grey Marl - R603.75

XS 51LFTM946GMB	XL 51LFTM946GMF
S 51LFTM946GMC	XXL 51LFTM946GMG
M 51LFTM946GMD	XXXL 51LFTM946GMH
L 51LFTM946GME	XXXXL 51LFTM946GM3



MEN'S HERITAGE FLANNEL SHIRT

Heritage in every stitch. This 100% brushed cotton shirt in Grey features an original check design with faux horn buttons, button down collar, two chest pockets and branded heritage tab.

Grey - R1 207.50

XS 51LFSM948GYB	XL 51LFSM948GYF
S 51LFSM948GYC	XXL 51LFSM948GYG
M 51LFSM948GYD	XXXL 51LFSM948GYH
L 51LFSM948GYE	



MEN'S HERITAGE POLO SHIRT

100% cotton piqué polo shirt in Grey Marl with contrast section to the upper chest. Features rib collar and cuffs with contrast tipping and wordmark side tab. Heritage logo to sleeve.

Grey Marl - R905.63

XS 51LFPM950GMB	XL 51LFPM950GMF
S 51LFPM950GMC	XXL 51LFPM950GMG
M 51LFPM950GMD	XXXL 51LFPM950GMH
L 51LFPM950GME	



UNISEX HERITAGE CAP

Classic baseball cap in Grey Marl with navy peak and trim. Features embroidered Heritage logo to the front with wordmark tab to one side.

Grey Marl - 51LFCH943GMA
R402.58





HERITAGE CANVAS WALLET

A classic wallet with six card slots and a slip for the Defender Multi Tool. Features laser etched Heritage logo and white stitching. Defender Multi Tool sold separately.
Navy - 51LGGF481NVA
R804.92



DEFENDER MULTI TOOL

Black steel credit card sized multi tool crafted into a Defender silhouette. Features a range of practical tools including tyre tread gauge.
Black - 51LDTT619NVA
R241.50





LAND ROVER CLASSIC WATCH

A new take on a Heritage classic. Featuring a rotating outer bezel that can be aligned to track a second time zone. With luminous hands and indices, Land Rover wordmark, date aperture and textured Italian leather strap. Water-resistant to 10 ATM. Supplied in Land Rover presentation box. White - 51LHWM975WTA
R3 320.63



LAND ROVER HERITAGE WATCH

A watch that takes you back. Inspired by original pilot designs, it features chronograph sub-dials, Heritage logo and leather strap with stitching detail. Complete with date aperture, matte black dial and ion-plated case. Supplied in Land Rover presentation box. Black - 51LHWM977BKA
R4 528.13



HERITAGE BOTTLE OPENER KEYRING

Handy keyring wrapped in fine leather with flip-out bottle opener. Features debossed Heritage logo, split ring and a lobster clasp.

Brown - 51LFKR360BNA
R402.58



ADVENTURE BEAR

A loyal companion for all of your little one's expeditions. Land Rover Adventure Bear dressed in oval badge shirt, shorts and explorer's hat with messenger bag.

Brown - 51LDY913BNA
R704.46



LAND ROVER ICON BOOK

The official Land Rover book covering the Series and Defender models. Containing ten chapters that celebrate these iconic vehicles and the people who drive them.

200 pages - 51LFGF412NAA
R1 207.50



DEFENDER KEYRING

Take the spirit of the Defender with you. This nickel-plated miniature die-cast keyring features a Land Rover wordmark etched into the split ring.

Silver - 51LEKR323SLA
R301.88



HERITAGE LOGO MUG

White bone china mug with Heritage logo to one side and Land Rover Defender print to the other.

White - 51LFMG363WTA

LIMITED AVAILABILITY
R241.50



HERITAGE PIN BADGE SET

Brass pin badges featuring a range of iconic Land Rover symbols. Includes Series I, Classic Range Rover, Heritage logo, oval badge and Heritage Station Wagon logo. Includes presentation tin.

Set of 5 - 51LFGF362NVA

LIMITED AVAILABILITY
R402.58

LAND ROVER

LEATHER WEEKEND BAG

Packed with versatility. Made from highly supple oil-washed natural-grain brown leather, this Leather Weekend Bag is flexible in every sense. Ideal for day trips or extended excursions, it features sturdy handles, a detachable padded shoulder strap and a practical zip pocket. Includes protective dust bag.
W 40cm H 18cm
Brown - 51LELU364BNA
R5 232.58

HERITAGE DUFFLE BAG

An over-the-shoulder drawstring duffle bag in Navy with white trim. Made from hardwearing canvas, this bag features an embroidered Heritage logo to the front.
H 50cm D 30cm
Navy - 51FLG361NVA
R1 911.96



THE HERITAGE COLLECTION



HERITAGE TOTE BAG

Carry the enduring spirit of Land Rover with you wherever you go. 100% cotton reusable canvas tote bag with Series I graphic to the front.
White - 51LFLU046WTA
R100.71



LAND ROVER

HUE MUG

Start your day's journey with this ceramic mug in Grasmere Green, featuring the HUE 166 logo with relief border. Microwave and dishwasher safe. Grasmere Green - 51LRCEAHUEG R241.50



1 HUE NOTEBOOK SMALL A6

Made with eco-friendly stone paper that's tough, tear-resistant, greaseproof and waterproof, this A6 notebook features the HUE 166 number plate logo. Includes a HUE technical drawing to the inside. Grasmere Green - 51LDNB561GNA R60.38

2 HUE NOTEBOOK AND ORGANISER

Take note. This HUE canvas notebook and organiser has a grey contrast stitch and versatile pocket storage. Features a HUE 166 woven badge. Grasmere Green - 51LDNB562GNA R301.88



THE HERITAGE COLLECTION



MEN'S HUE GRAPHIC T-SHIRT

A 100% cotton T-shirt with a technical drawing of the famous HUE 166 on the chest.

Black - R503.04

LIMITED AVAILABILITY

S	51LDTM558BKC	XXL	51LDTM558BKG
M	51LDTM558BKD	XXXL	51LDTM558BKH
L	51LDTM558BKE	XXXXL	51LDTM558BK3
XL	51LDTM558BKF		

Grey - 51LDTM558GY

R503.04

White - 51LDTM558WT

R503.04



HUE 166 KEYRING

Classic HUE 166 number plate logo keyring in polished chrome.

Black - 51LDKR914BKA

R301.88



HUE TEDDY BEAR

Children's soft toy dressed in Heritage HUE 166 overalls and tweed flat cap. Sporting a Land Rover logo, he makes a popular gift for any child. Suitable for all ages with appropriate adult supervision.

Brown - 51LDTY618BNA

R704.46



HUE CERAMIC PET BOWL

A sturdy Grasmere Green ceramic pet bowl with an embossed HUE 166 number plate logo to the front.

Small - 51LFPT398GNA

R442.67

Large - 51LDPT788GNA

R442.67



**BARBOUR TARTAN
DOG BANDANA**

A bandana specially made for dogs, featuring Barbour for Land Rover Tartan in 100% cotton.
S / M - 51BEPT286MX4
R402.58



**BARBOUR TARTAN
DOG HARNESS**

Stylish and functional dog harness featuring Barbour for Land Rover Tartan.
R402.58
LIMITED AVAILABILITY
L 51BEPT287MXE



**BARBOUR TARTAN
DOG COLLAR**

Barbour for Land Rover Tartan collar lined with leather. Features aged brass-plated metal fittings.
R804.92
S 51BEPT284MXC
M 51BEPT284MXD
L 51BEPT284MXE



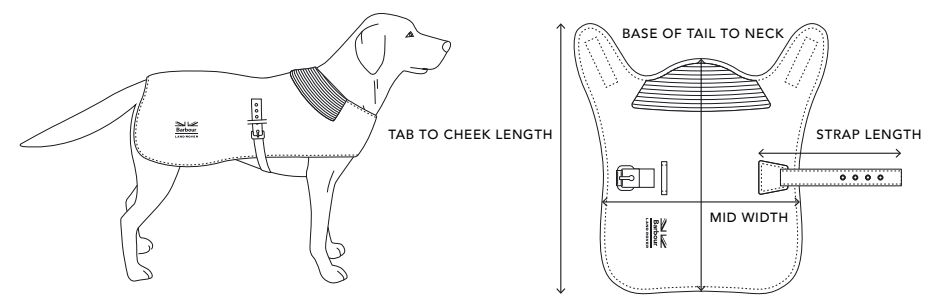
**BARBOUR TARTAN
DOG LEAD**

Made from real leather, this lead features contrast top stitching and aged brass-plated fittings.
One size - 51BEPT285MXA
R1 106.79



BARBOUR WAX DOG COAT
Keep your best friend safe from the elements in this water-resistant, wax jacket. Made with Barbour for Land Rover Tartan, it features a collar that lifts for extra protection.
R905.63
LIMITED AVAILABILITY
S 51BEPT289OLC
M 51BEPT289OLD
L 51BEPT289OLE

DOG COAT SIZE GUIDE



SIZE	S	M	L	XL
BREED	Terrier	Spaniel	Retriever	Pointer
NECK TO TAIL	35cm	45cm	55cm	66cm
MID WIDTH	30cm	38cm	46cm	55cm
TAB TO CHEEK LENGTH	44cm	57cm	70cm	82cm
STRAP LENGTH	26cm	34cm	43cm	52cm

DOG COLLAR SIZE GUIDE

SIZE	S	M	L
COLLAR MEASUREMENTS	14mm x 40cm	19mm x 53cm	25mm x 63.5cm
TO FIT NECK	27.5cm x 35.5cm	36cm x 46mm	47cm x 56.5cm

CLOTHING SIZE GUIDE

UK MEN'S	XS	S	M	L	XL	XXL	XXXL	XXXXL
CHEST (CM)	88	92	97	102	107	112	117	122

Product availability and pricing are subject to change. All copy and images remain the copyright of Jaguar Land Rover. Correct at time of publication; subject to availability and market; Jaguar Land Rover reserve the right to remove or change specification of items in the range at any time.



ABOVE & BEYOND

Visit your nearest Retailer.

All prices are inclusive of VAT.

Registered Office:

Abbey Road, Whitley, Coventry CV3 4LF

Registered in England No: 1672070.

VAT Registration No: GB927153228.